

Changing IP-Setting of DMM Devices

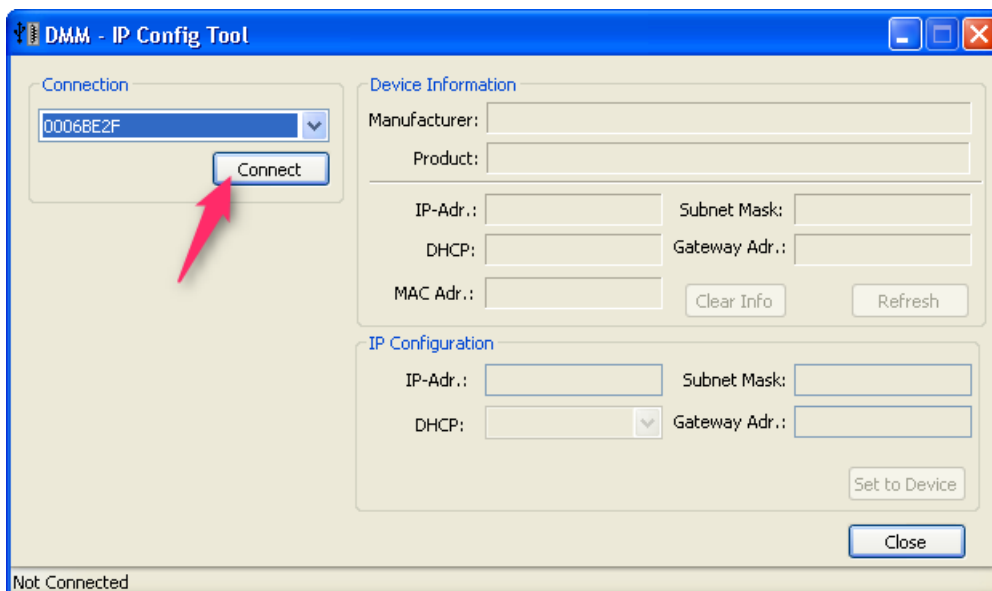
Equipment:

DMM-Devices: DMM-8UL, DMM-8ULD, DMM-14UL, DMM-14ULD

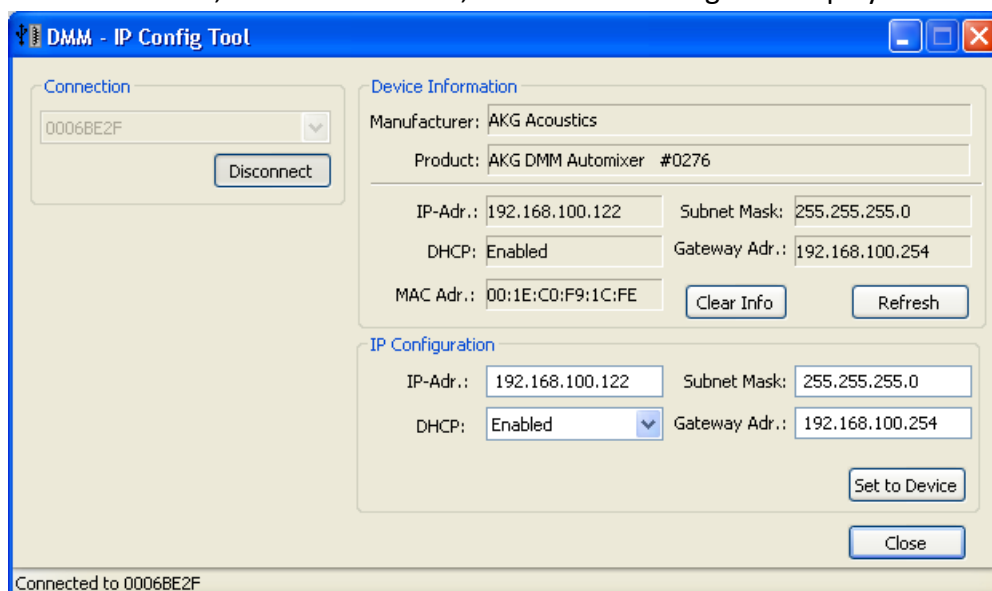
PC: Win-XP, Win7

Steps:

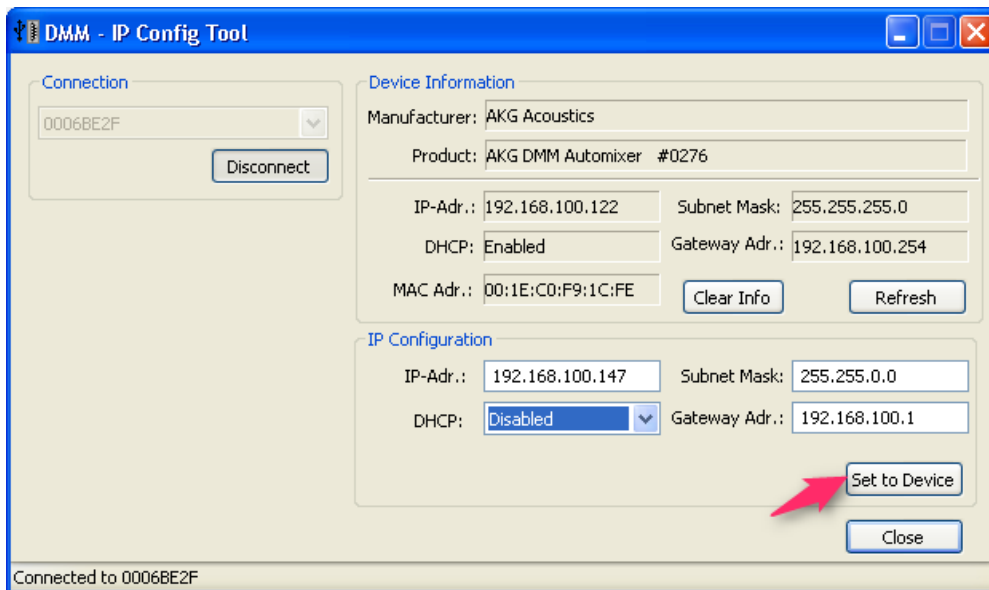
1. Connect the DMM Device via the rear USB-Connector to your PC/Notebook.
2. After detection of the DMM Device via the USB-Port a message appears, that confirms the DMM-HW is now ready to use.
3. Please create a path "C:\IP_Config_Tool" (free drive or name) on your PC/Notebook and copy the software into that path.
4. Double click and start the application "DMM_IP_Config_1xx.exe", then the following dialog appears:



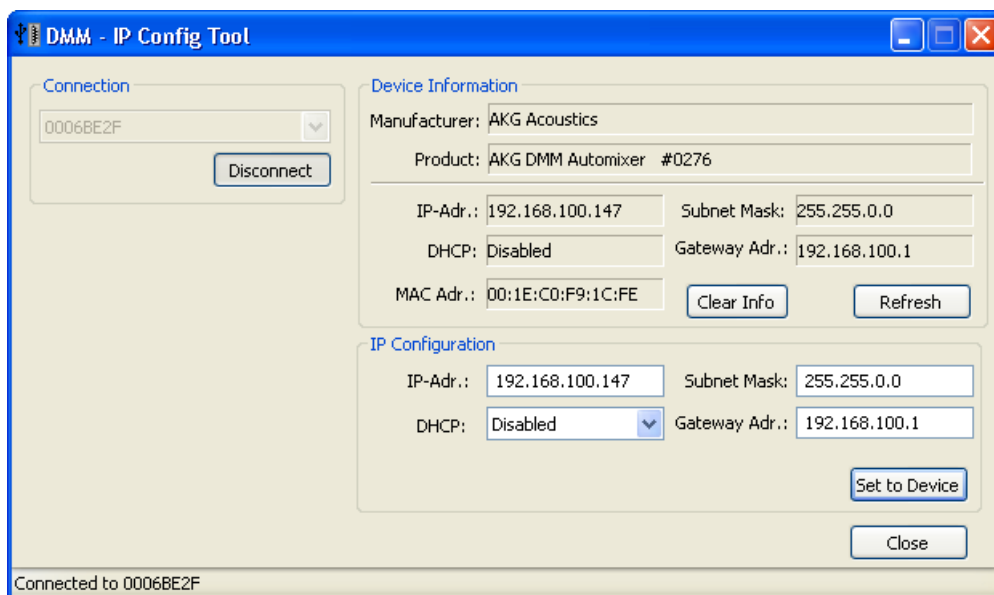
5. Click the "Connect"-button to connect the DMM-Device, which is represented via an Handle Number, here: "0006BE2F", then the IP-Settings are displayed in the dialog:



- To change the IP-Settings modify one or more parameter in “IP-Configuration” group and then press the “Set to Device” button:



- After pressing the “Set to Device” button the data in the “Device Information” group is updated and should show now the parameter values of the IP-Configuration group:



Note: If not all parameters were updated at the first time,
please press “Set to Device” button again.